

Commer

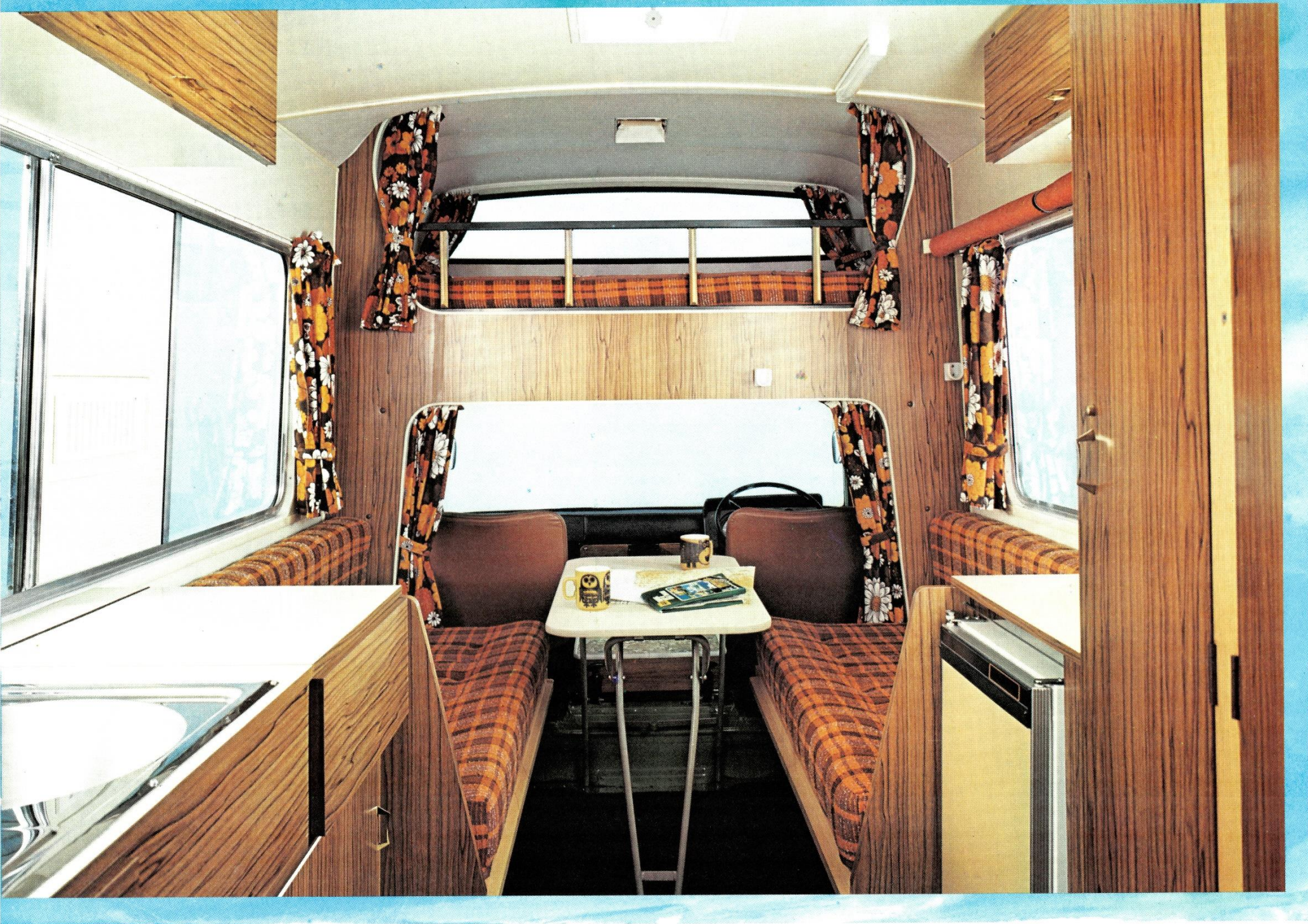
 **AUTOHOMES MOTORHOME**



MOTORHOME - THE ALL-TIME FAVOURITE!

At the top of the motor caravan league is the Motorhome by CI Autohomes - a coachbuilt caravan offering the ultimate in interior accommodation with the economy and dependability of the Commer 2500 on which it's built.





THE MOTORHOME

provides luxury living to probably the greatest degree possible in a Commer motor caravan, with its Upstairs-Downstairs sleeping accommodation. You can put the kids to bed in their curtained upstairs bedroom while downstairs retains its daytime layout. This double bed, over the driving compartment, is big enough for a couple of children or one adult.

The ground floor provides exceptional space, with full standing headroom throughout. There is no elevating roof and none is required. Easy access from the driving compartment with its useful centre table leads to an inward-facing seating area for four which converts to a cosy dinette or a large double bed.

Behind that is the kitchen, equipped with a two-burner-and-grill gas cooker and a stainless steel sink and drainer unit supplied by a hand pump from the 72 litre (16 gallon) underfloor plastic water tank. An easy-clean heat-resistant worktop is provided with storage cupboards underneath.

Another outstanding feature of the Motorhome is the separate toilet compartment right at the rear, with a folding door which hinges out to provide a screened-off changing area. A chemical toilet is an optional extra.

A full-length hanging wardrobe is fitted next to the toilet compartment, with further high and low-level lockers throughout the caravan interior to provide an exceptional amount of storage space.

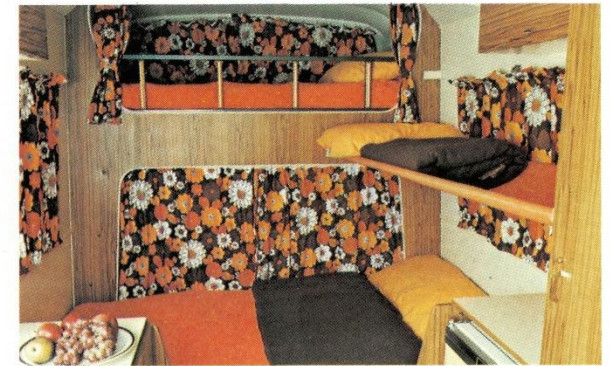
A further rollaway bunk is fitted within the body of the vehicle, to make the Motorhome a five-berth caravan with really excellent and spacious accommodation. Interior decor is carried out in high-quality wood veneer with harmonising fabric for upholstery and curtains. Well-located fluorescent lighting provides bright overall illumination at night.

Double-skin insulated sides and roof keep the Motorhome cool in the sun but warm at night, ensuring minimum heat transmission. Built-in ventilators and a large opening skylight provide plenty of ventilation, while the large side windows give a fine view.

The Motorhome is one of the most luxurious and best-equipped motor caravans you can buy, well suited to long lazy holidays and long fast distances. You'll find its performance well up to mountain passes or fast Autoroutes and its fuel economy most impressive. It's easy to drive, manoeuvrable in heavy traffic, smooth over bad surfaces and untiring to ride in for hour after hour!

DAYTIME

Driver's seat and single passenger seat in driving compartment. Inward-facing seats for four in dinette behind driving compartment.



NIGHT-TIME

Double bed for two children or one adult above driving compartment remains undisturbed during day. Large transverse double bed in rear compartment, converted from dinette seats. Additional rollaway bunk is fitted in the body of the vehicle, providing total sleeping accommodation for up to five.

COMMER SPACE CARAVANS

freedom you can afford





MOTORHOME

BASE VEHICLE SPECIFICATION

Base model

Commer 2500 Series.

Plated gross vehicle weight

2470 kg (2.43 tons).

Wheelbase

228.6 cm (90 in).

Axle, rear

Semi-floating, hypoid bevel gears.

Brakes

Hydraulic. Duo-servo on front wheels, leading and trailing shoes on rear wheels.

Clutch

Single dry plate diaphragm spring, hydraulically operated. 216 mm (8½ in) diameter. Graphite release bearing.

Electrical

12 volt lighting and starting. 38 amp hr battery (51 amp hr when automatic transmission specified) at 10 hr rate. Sealed beam headlamps with double filament bulbs. Four-way emergency flasher.

Engine

Four-cylinder in-line high compression petrol engine. 1725 cm³ (105 in³) capacity. 57 bhp (DIN) at 4500 rpm, 11.61 kgf m (84 lbf ft) DIN torque at 2200 rpm.

Fuel tank

40.9 litres (9 gallons).

Steering

Cam and peg, ratio 17:1. Turning circle 11.277 m (37 ft).

Suspension, front

Independent coil springs and anti-roll bar. Hydraulic telescopic shock absorbers.

Suspension, rear

Semi-elliptic triple rate leaf springs. Hydraulic lever-type shock absorbers.

Transmission

Four-speed all-synchromesh gearbox. Optional extras: automatic transmission or overdrive.

Tyre equipment

185 x 14 radial ply.

Underframe

All-welded unitary construction.

Wheels

5J x 14 pressed-steel disc. Five stud fixing.

Chassis Equipment

Chromed front bumper. Rubber rear bumpers. Chrome hub caps. Spare wheel, tyre and carrier. Tool kit, including jack and wheelbrace.

Deluxe Driving Compartment

Wrap-round toughened safety glass windscreen. Moulded rubber floor covering. Twin two-speed windscreen wipers. Electric windscreen washers. Steering column lock. Padded door panel trim. Soft headlining. Padded fascia panel with wood veneer insert. Adjustable driver's seat and single passenger seat with tan vinyl trim. Insulated engine cover. Central ash tray. Cigarette lighter. Heater and demister. Grab handle. Large rear view mirrors. Interior sun visors. Seat belts and fittings are a mandatory accessory fitted at extra cost.

Instrumentation

Instrument binnacle housing speedometer and mileage recorder, fuel gauge, water temperature gauge, voltmeter, combined electric windscreen washer and two-speed wiper switch, warning lights for ignition, oil pressure, main beam, direction indicators, four-way emergency flasher. Rocker switches for lights, heater blower and four-way emergency flasher.

ABRIDGED CARAVAN DATA

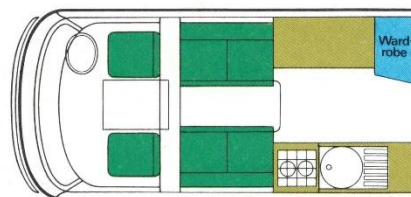
Base vehicle: Commer 2500 Series

Chrysler SEO approved bodywork number: SB 1025.

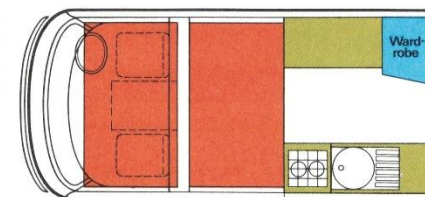
Gross Vehicle Weight	2470 kg (2.43 tons).
Kerb Weight	1627 kg (1.60 tons).
Load Capacity	843 kg (0.83 tons).
Overall dimensions	
Length	458.4 cm (15 ft 0½ in).
Width	210.8 cm (6 ft 11 in).
Height	275.2 cm (9 ft 0¼ in).
Internal dimensions	
Length (behind driver)	279.1 cm (9 ft 2 in).
Width (maximum)	191.8 cm (6 ft 3½ in).
Height (maximum)	187.3 cm (6 ft 1¾ in).
Bed sizes	
Main double bed	191.1 x 129.5 cm (6 ft 3¼ in x 4 ft 3 in).
Over-cab bed	181.6 x 95.9 cm (5 ft 11½ in x 3 ft 1¾ in).
Rollaway bunks	182.9 x 63.5 cm max. (6 ft 0 in x 2 ft 1 in max.).
Gas storage	Provision for two Camping Gaz cylinders with exterior access.
Water storage	72 litre (16 gallon) underfloor plastic tank.
Lighting	Two transistorised fluorescent lights.
Optional extra fittings	Dual gas/electric refrigerator. Chemical toilet. Fly screens. Left-hand drive.

Customer Assurance Programme

The base vehicle is covered by Chrysler's unique PROTECTOR – a twelve month warranty regardless of mileage PLUS the Extra Care Policy, providing free replacement of certain wearing parts. A really comprehensive after-sales service. Ask your Chrysler dealer for further details.



DAYTIME



NIGHT-TIME



AUTOHOMES

CI Autohomes Ltd Ringwood Road
Parkstone Poole Dorset BH12 3LX
Tel: Parkstone (0202) 743361 Telex: 41342.

While the information contained in this brochure is correct as at time of printing, it may be that on account of the use of alternative materials or the shortage of supplies, alterations may have to be made to the motor caravans described in this brochure. Particulars of any changes may be obtained from CI Autohomes Ltd, Ringwood Road, Parkstone, Poole, Dorset, England.

